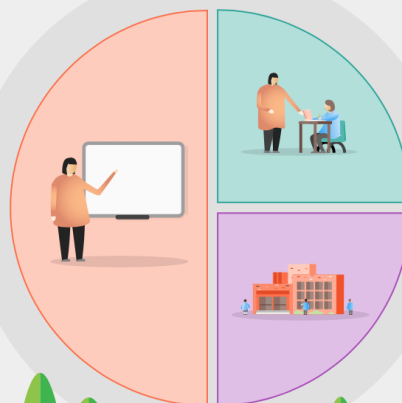


Tintagel Primary School Plan - Making Best Use of the Catch-up Premium

Following the enforced interruption to schools earlier this year, due to the Covid 19 pandemic, the Government pledged extra funding to help children catch up where they may have fallen behind. Below is an overview of how we will be using this funding.

1 Teaching

- Quality first teaching of our RWI phonics and early reading fluency programme at EYFS and KS1
- Introduction of Fresh Start RWI programme for KS2 children who are still not fluent in reading.
- Strategic release for Reading Lead to deploy training and coaching for staff.



2 Targeted academic support

- Deployment of high quality, daily small group and 1:1 RWI Phonic and Reading intervention for children in Year 1 and Year 2 who have lost progress due to school closure.
- Targeted small group/1:1 support for KS2 children using RWI Fresh Start programme.

3 Wider strategies

- Release for Reading lead to support most vulnerable readers with memory and retrieval practice linked to evidence-based research into how children learn best.
- RWI Phonics and Reading support for parents both in school and online.

